

Ai



Toad 101 Series

Episode 4

Mastering Your Oracle Database Connection



Albert Rodriguez

Solutions Consultant

✉ Albert.rodriguez@quest.com

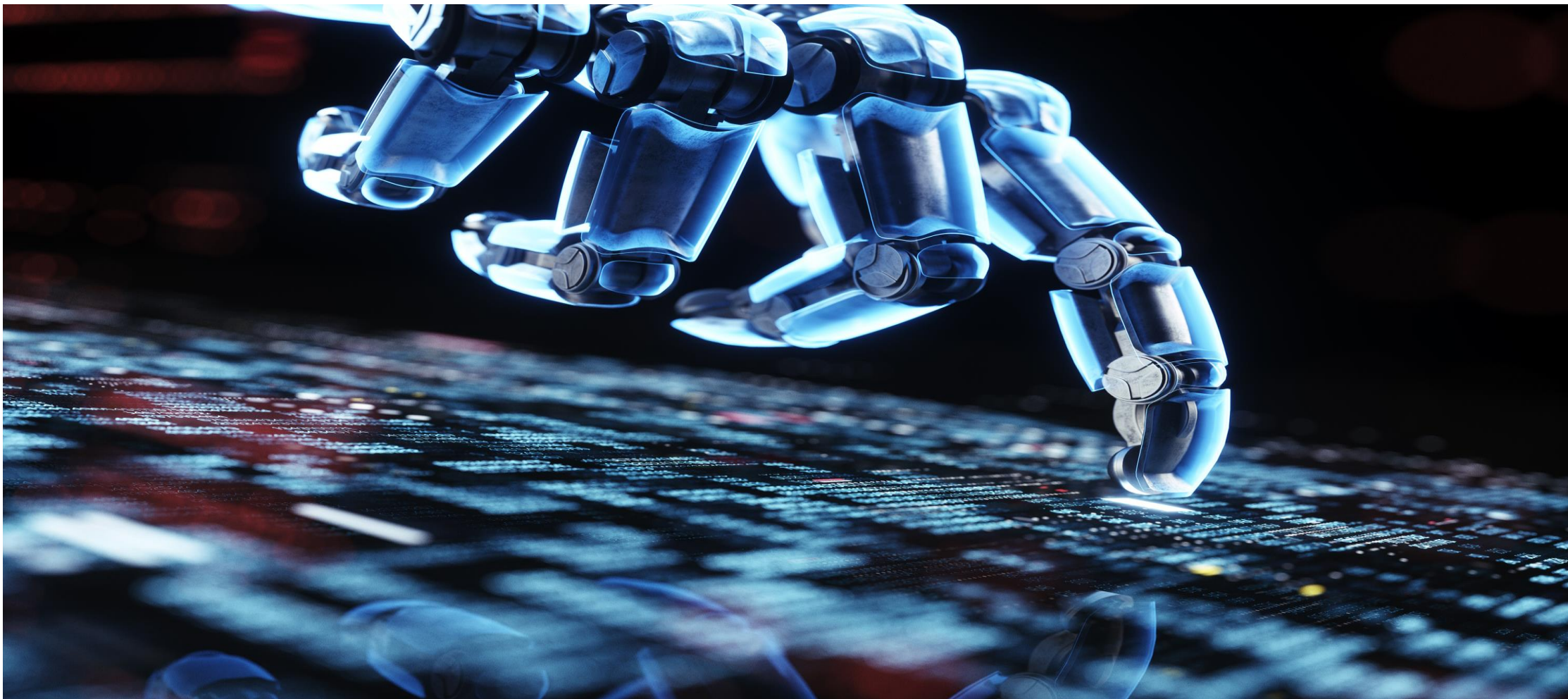


Agenda

- Establishing Connections
- Managing Connections
- Streamlined Access
- Integrating Workspaces



Establishing Connections



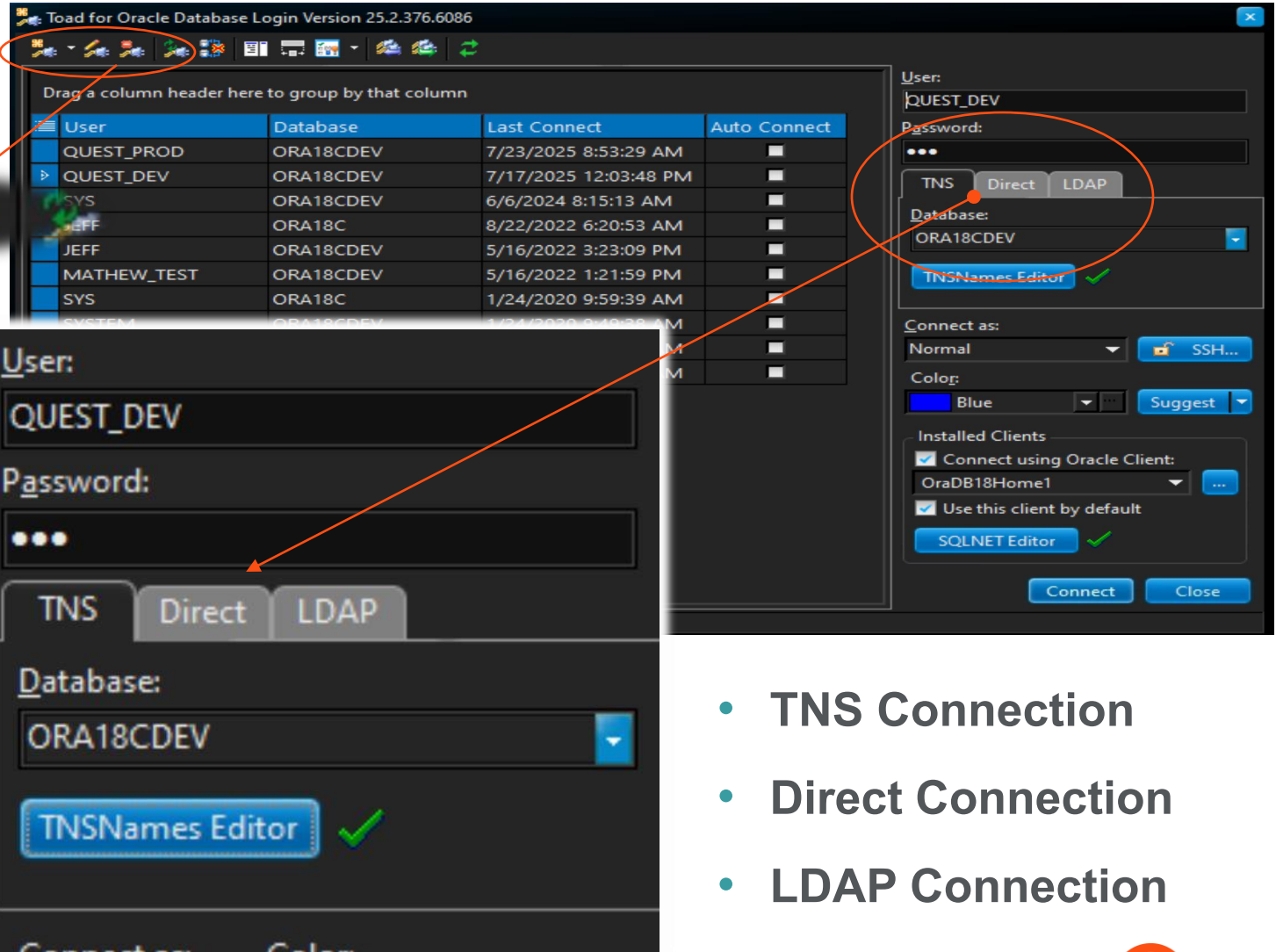
Methods of Connecting

```
ORA18C =  
(DESCRIPTION =  
  (ADDRESS =  
    (PROTOCOL = TCP)  
    (HOST = localhost)  
    (PORT = 1521)  
  )  
)  
(CONNECT_DATA =  
  (SERVER = dedicated)  
  (SERVICE_NAME = ora18c)  
)  
)
```

```
ORA18CDEV =  
(DESCRIPTION =  
  (ADDRESS =  
    (PROTOCOL = TCP)  
    (HOST = localhost)  
    (PORT = 1521)  
  )  
)  
(CONNECT_DATA =  
  (SERVER = dedicated)  
  (SERVICE_NAME = ora18cdev)  
)  
)
```

```
LISTENER_ORA18C =  
(ADDRESS = (PROTOCOL = TCP)(HOST = localhost)(PORT = 1521))
```

```
ORA18C_CONNECTION_DATA =  
(DESCRIPTION =  
  (ADDRESS_LIST =  
    (ADDRESS = (PROTOCOL = IPC)(KEY = EXTPROC1521))  
  )  
)  
(CONNECT_DATA =  
  (SID = CLRExtProc)  
  (PRESENTATION = RO)  
)  
)
```



- TNS Connection
- Direct Connection
- LDAP Connection

Establishing Connections

Add Login Record

User:
JohnSmith

Password:
.....

TNS Direct LDAP

Database:
LISTENER_ORA18C
ORA18C
ORA18CDEV
ORACLR_CONNECTION_DATA

Auto Connect Read Only

User:
JohnSmith

Password:
.....

TNS Direct LDAP

Host: Port:
1521

☒ Service Name: ☐ SID:

Instance Name: [less](#)

Protocol:
TCP

Wallet Location: [...](#)

☐ SSL Server DN Match

Auto Connect Read Only

User:
JohnSmith

Password:
.....

TNS Direct LDAP

LDAP Descriptor:
[...](#)

Auto Connect Read Only

Direct Connection

```
ORA18C =  
  (DESCRIPTION =  
    (ADDRESS =  
      (PROTOCOL = TCP)  
      (HOST = localhost)  
      (PORT = 1521)  
    )  
    (CONNECT_DATA =  
      (SERVER = dedicated)  
      (SERVICE_NAME = ora18c)  
    )  
  )  
  
ORA18CDEV =  
  (DESCRIPTION =  
    (ADDRESS =  
      (PROTOCOL = TCP)  
      (HOST = localhost)  
      (PORT = 1521)  
    )  
    (CONNECT_DATA =  
      (SERVER = dedicated)  
      (SERVICE_NAME = ora18cdev)  
    )  
  )  
  
LISTENER_ORA18C =  
  (ADDRESS = (PROTOCOL = TCP)(HOST = localhost)  
  
ORACLR_CONNECTION_DATA =  
  (DESCRIPTION =  
    (ADDRESS_LIST =  
      (ADDRESS = (PROTOCOL = IPC)(KEY = EXTPROC1521)  
    )  
    (CONNECT_DATA =  
      (SID = CLRExtProc)  
      (PRESENTATION = RO)
```

User: JohnSmith

Password:

TNS Direct LDAP

Host: Port: 1521

☒ Service Name: ☐ SID:

Instance Name: less

Protocol: TCP

Wallet Location: ...

☐ SSL Server DN Match

Adding Connections

The screenshot displays the Quest Developer Studio interface. The 'Session' menu is open, showing options: 'New Connection', 'Close Connection', 'Close All Connections', and 'Test All Connections (Reconnect)'. A red arrow points from the title 'Adding Connections' to the 'New Connection' option. Another red arrow points from the 'New Connection' option to a table of existing connections.

	Database	Last Connect	Auto Connect
QUEST_PROD@ORA18CDEV	ORA18CDEV	7/23/2025 8:53:29 AM	<input type="checkbox"/>
QUEST_DEV@ORA18CDEV	ORA18CDEV	7/17/2025 12:03:48 PM	<input type="checkbox"/>
SYS@ORA18CDEV	ORA18CDEV	6/6/2024 8:15:13 AM	<input type="checkbox"/>
JEFF@ORA18C	ORA18C	8/22/2022 6:20:53 AM	<input type="checkbox"/>
JEFF@ORA18CDEV	ORA18CDEV	5/16/2022 3:23:09 PM	<input type="checkbox"/>
MATHEW_TEST@ORA18CDEV	ORA18CDEV	5/16/2022 1:21:59 PM	<input type="checkbox"/>
SYS@ORA18C	ORA18C	1/24/2020 9:59:39 AM	<input type="checkbox"/>
SYSTEM@ORA18CDEV	ORA18CDEV	1/24/2020 9:49:38 AM	<input type="checkbox"/>
SYSTEM@ORA18C	ORA18C	1/24/2020 9:33:49 AM	<input type="checkbox"/>
QUEST_PERF@ORA18CDEV	ORA18CDEV	1/24/2020 9:15:38 AM	<input type="checkbox"/>

The 'New Connection' dialog box is also visible, showing fields for 'User' (QUEST_DEV), 'Password', and 'Database' (ORA18CDEV). It includes tabs for 'TNS', 'Direct', and 'LDAP', and buttons for 'TNSNames Editor', 'Describe', 'Browser Filters...', 'Flashback', 'Commit', 'Rollback', 'Transactions', 'Recent', and 'Close Connection'.

Managing Connections



Personalizing Connections

Quest

Add Login Record

User: JohnSmith
Password: [masked]

TNS Direct LDAP
Database: ORA18C

Connect as: Normal SSH...
Color: None Suggest
Connect Using: OraDB18Home1
Alias: [empty]

☐ Execute action upon connection
Action: [empty] [...]
Parameter file: [empty] [...]

Custom Columns

Name	Value
------	-------

☒ Save Password ☐ Favorite
☐ Auto connect ☐ Read Only

Post Test ☐ Connect OK Cancel

- **Connect as:**
- **Color**
- **Alias**
- **Save Password**
- **Read Only**
- **Favorite**

Color

Add Login Record

User: JohnSmith

Password:

TNS Direct LDAP

Database: ORA18C

Connect as: Normal SSH...

Color: None Suggest

Connect Using: OraDB18Home1

Alias:

Execute action upon connection

Action: Parameter file:

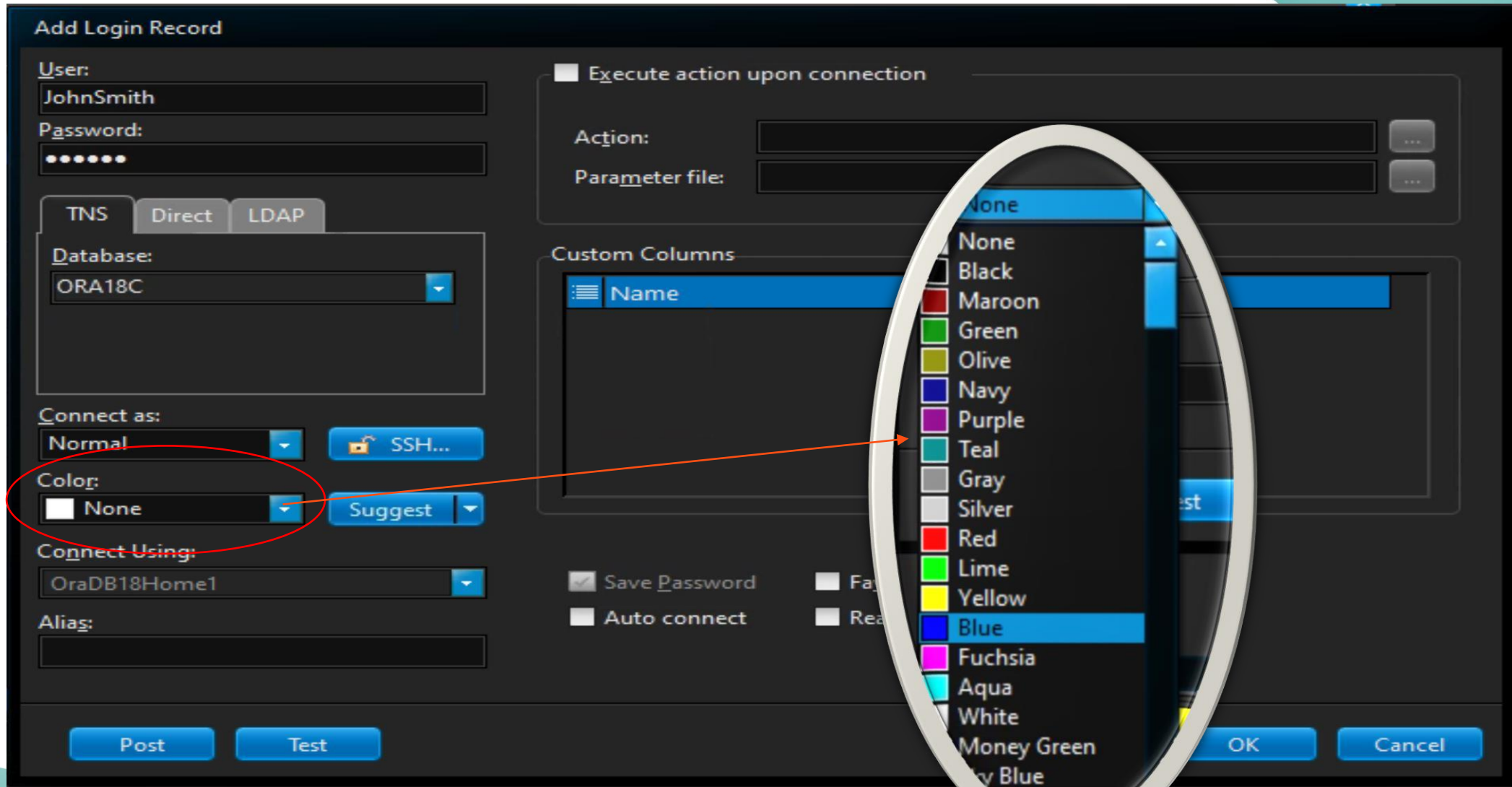
Custom Columns

Name

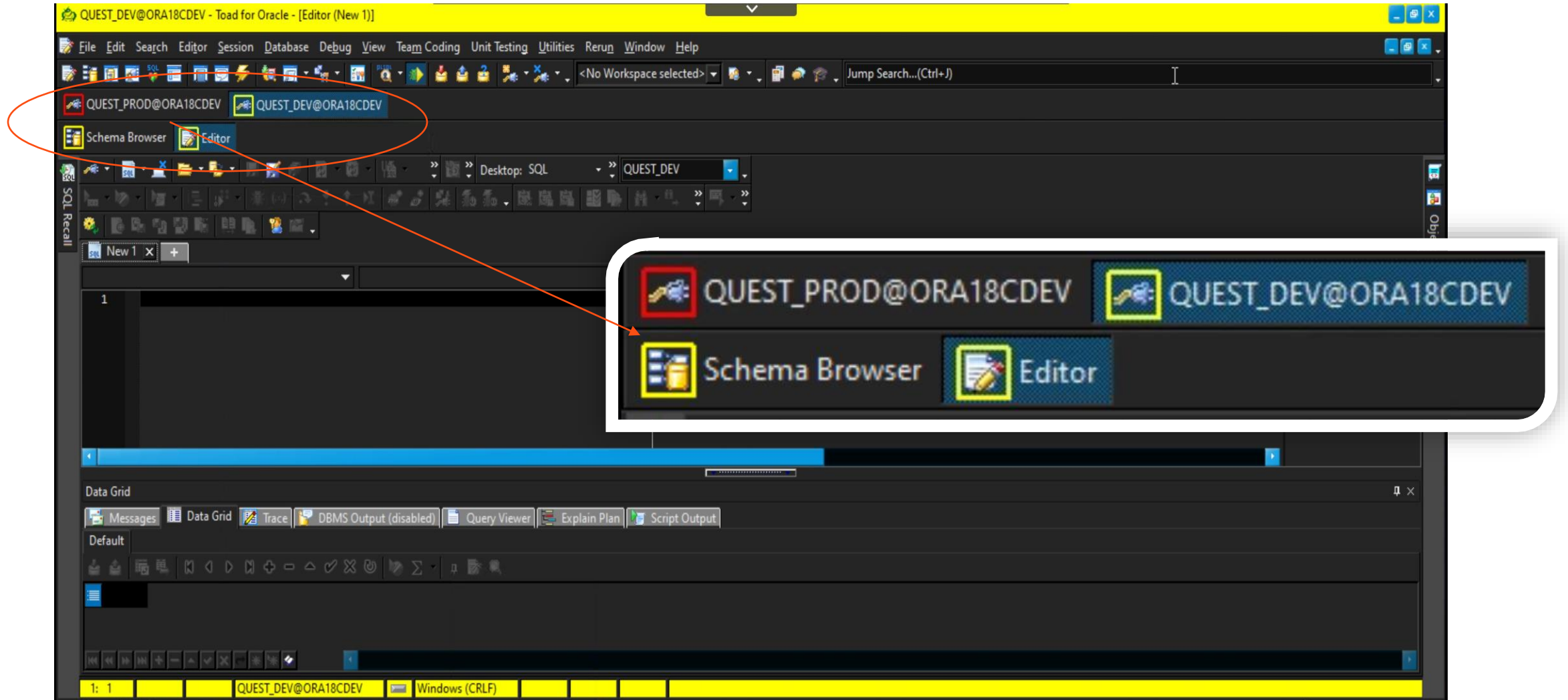
Save Password Auto connect

OK Cancel

Post Test

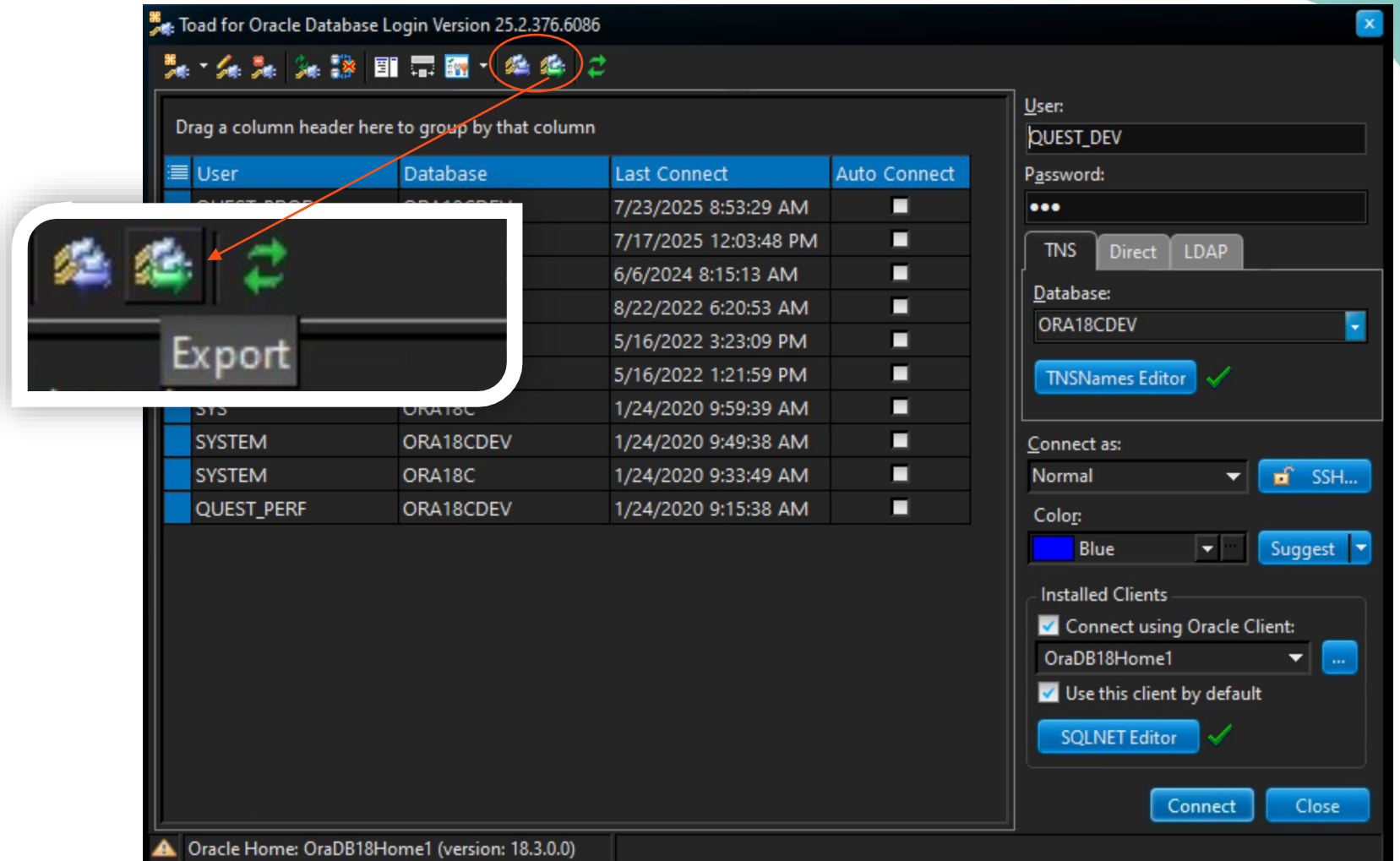
The image shows a 'Add Login Record' dialog box. The 'Color' dropdown menu is open, showing a list of colors: None, Black, Maroon, Green, Olive, Navy, Purple, Teal, Gray, Silver, Red, Lime, Yellow, Blue, Fuchsia, Aqua, White, Money Green, and Sky Blue. The 'Blue' option is highlighted. An orange arrow points from the 'Color' dropdown in the dialog to the 'Blue' option in the color selection list. The dialog also includes fields for User (JohnSmith), Password (masked), Database (ORA18C), Connect as (Normal), Connect Using (OraDB18Home1), and Alias. There are buttons for SSH..., Suggest, Post, Test, OK, and Cancel. A 'Custom Columns' section is also visible.

How Color Helps

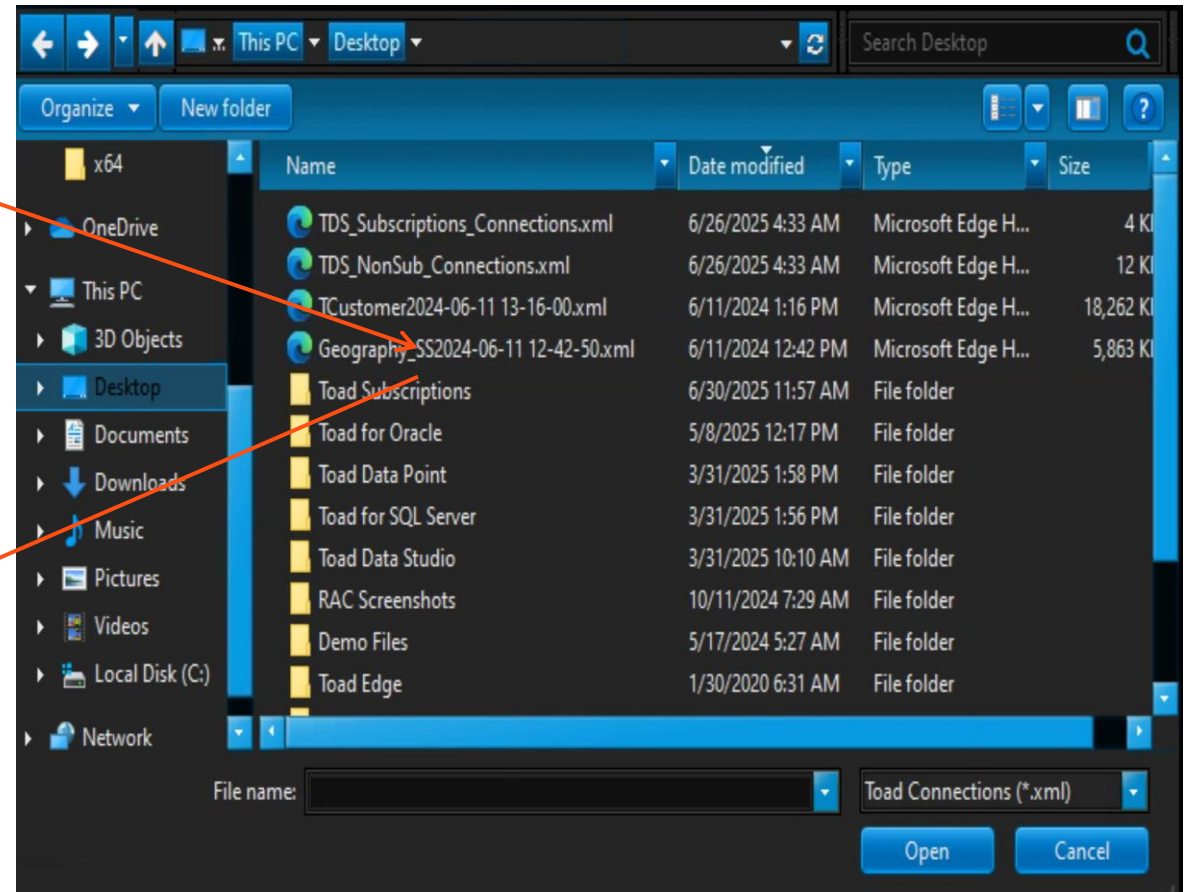
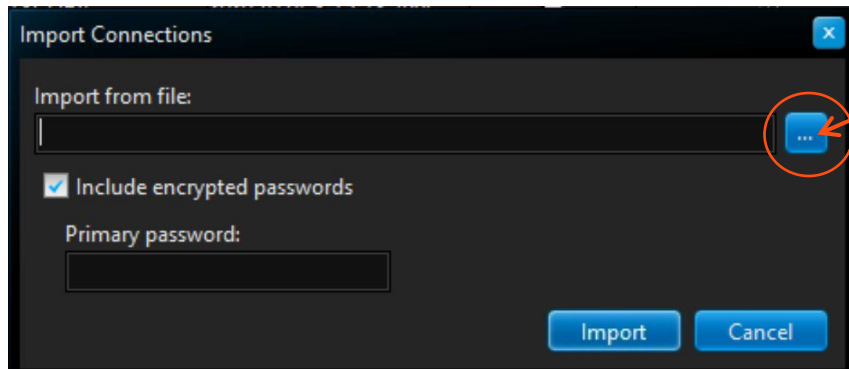
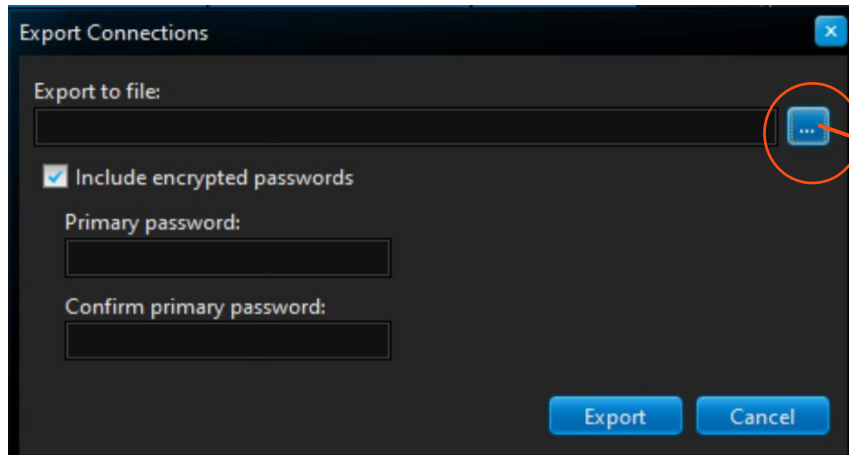


Sharing Connections

- Export Connections
- Import Connections



Export/Input Connections



Streamlined Access



Instant Connections

Quest

Add Login Record

User: JohnSmith

Password:

TNS Direct LDAP

Database: ORA18C

Connect as: Normal SSH...

Color: None Suggest

Connect Using: OraDB18Home1

Alias:

☐ Execute action upon connection

Action: ...

Parameter file: ...

Custom Columns

Name	Value
------	-------

☒ Save Password ☐ Favorite

☐ Auto connect ☐ Read Only

Post Test Connect OK Cancel

Connect and Kick-off



Add Login Record

User:

Password:

☒ Execute action upon connection

Action:

Parameter file:

TNS Direct LDAP

Select App or Action

- Default
 - App1
- Samples
 - Sample Dev App
 - Check Server
 - Sample DBA App
 - Check Servers
 - Sample Code Quality App
 - Check Servers
 - App2
 - DB Health Check1
 - Email1
 - App3
 - Generate Schema Script1
 - DB Health Check1
 - Export Dataset1
 - If..Then..Else1

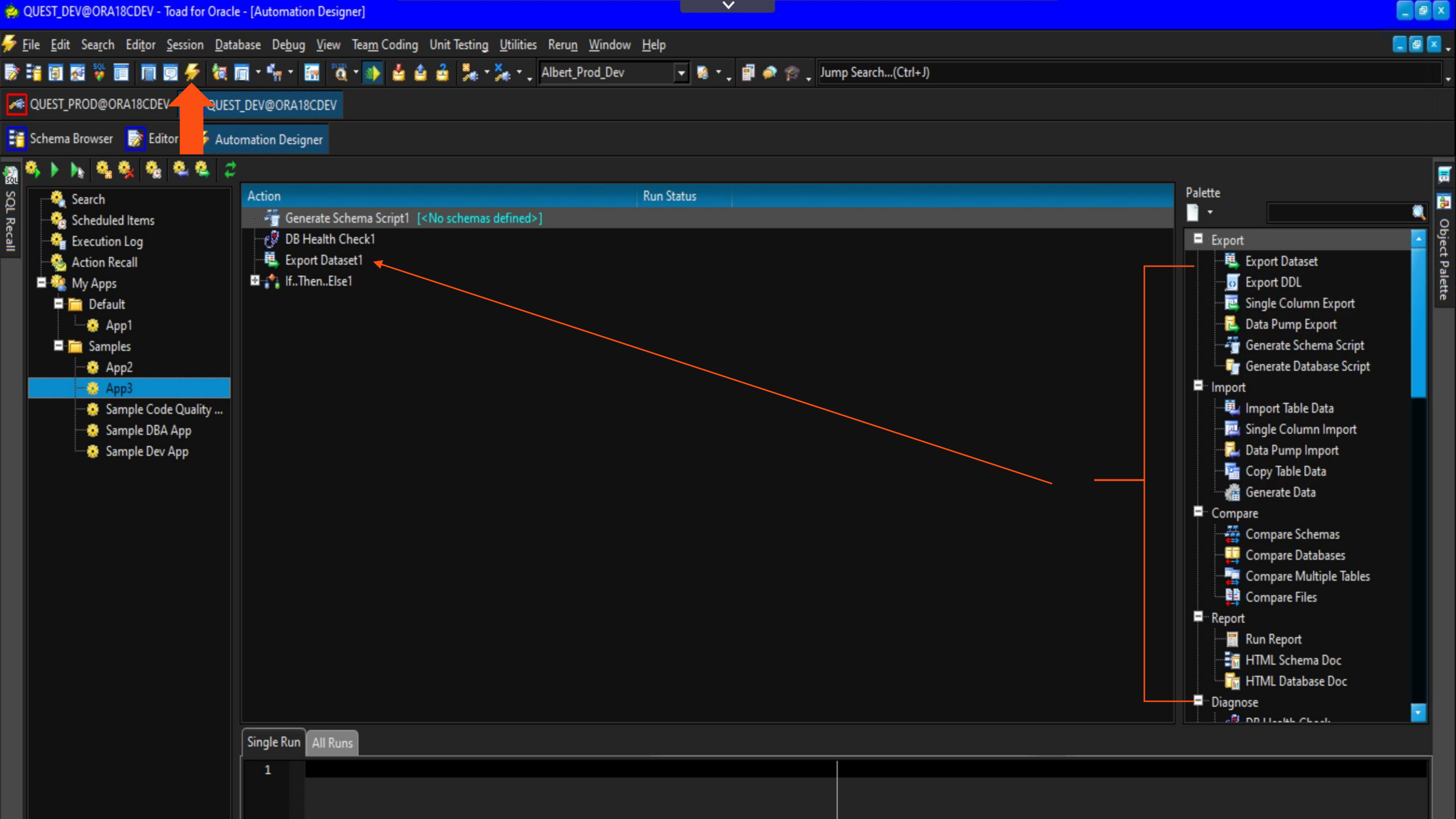
Value

Favorite

Read Only

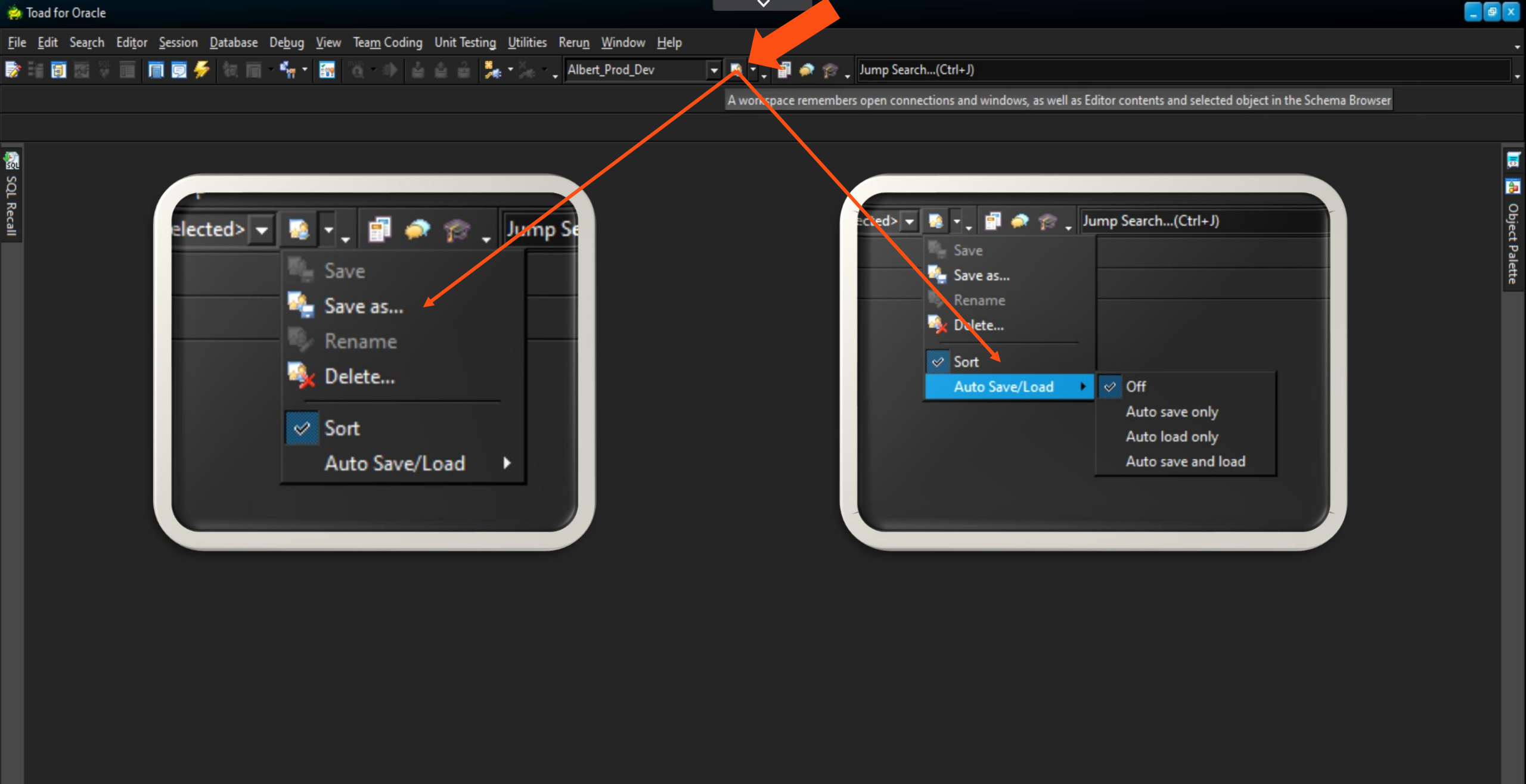
Connect OK Cancel

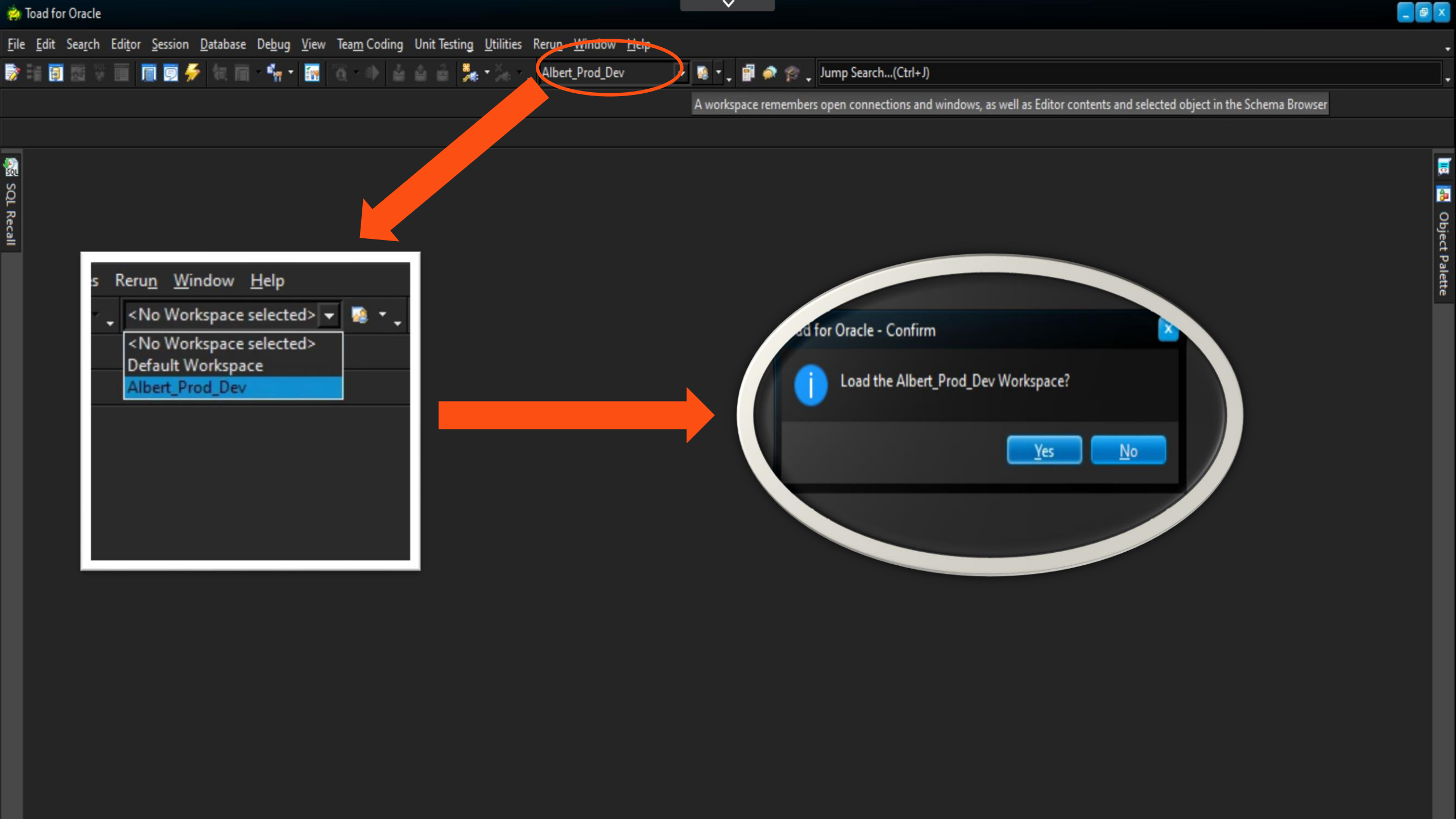
OK Cancel

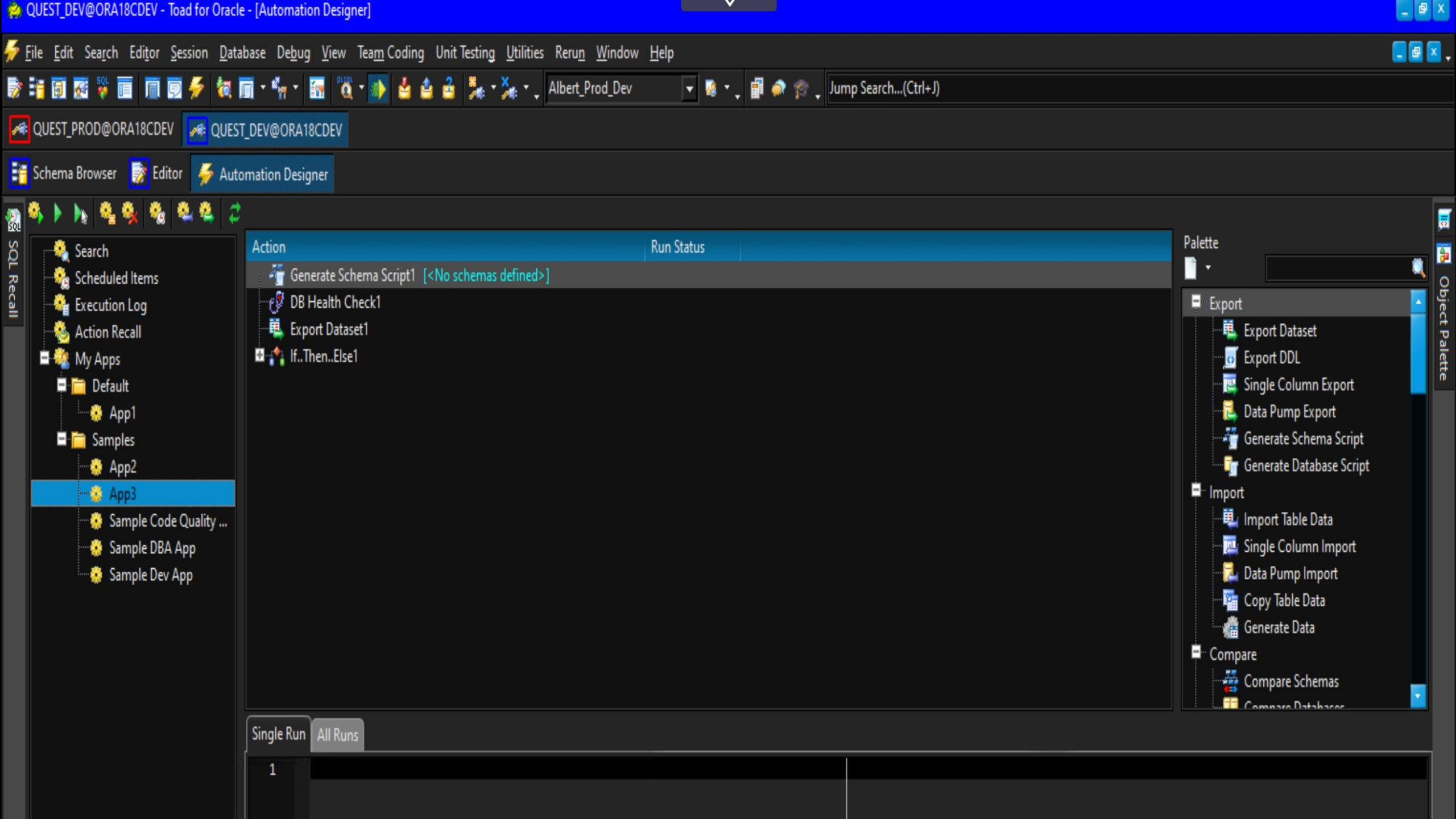


Integrating Workspaces









Questions?

A woman with blonde hair tied back, wearing a light-colored, textured sweater, is sitting at a desk and working on a laptop. The background shows a modern office environment with a desk lamp, a coffee cup, and a window. The image has a teal tint and is overlaid with several thin, white, curved lines on the left side.

Quest
Where Next Meets Now.



Looking Forward to Seeing You There!

Skills 101 – Toad Episode 5

The Power of the Toad Editor

October 22nd, 2025

Mat Phan
Solutions Consultant



<https://www.quest.com/data-management-skills-training/toad-skills-101-series.aspx>