

erwin[®] Data Quality by Quest[®]

Ensure data you can trust with intelligence-integrated data quality visibility and cross-platform data observability.

As your organization increasingly relies on data to drive business decisions, you must be able to trust the sources and reliability of your data. Data quality is a vital component of data intelligence and data governance in the pursuit to democratize data.

erwin Data Quality, part of erwin Data Intelligence by Quest, gives IT, governance teams and business users visibility into data quality and the capabilities to move data quality initiatives forward. Built upon the Gartner-recognized augmented data quality platform from DQLabs, the data quality offering from erwin automates data quality assessments starting with the metadata cataloged within erwin Data Intelligence.

Automated data profiling and quality scoring, cross-platform data observability and integrated data quality visibility throughout erwin Data Intelligence provide the practical means to discover and understand data quality and ensure the quality of critical data remains high.

With erwin Data Intelligence, organizations have the integrated data quality and observability capabilities needed to fuel governance efforts, ensure data readiness for AI, extend data literacy and trust, and reduce quality-driven operational risks and costs.

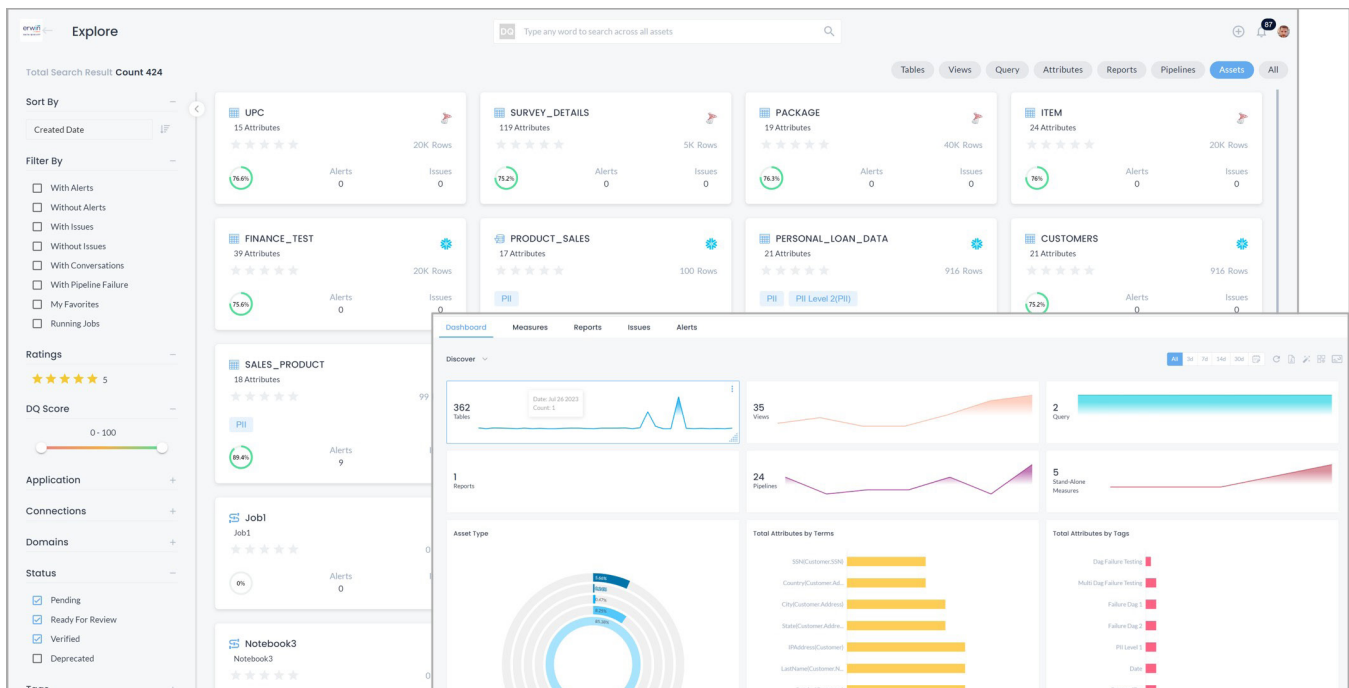
Key Features

- **Automated data profiling and quality analysis** – Start from the metadata inside erwin Data Catalog by Quest to initiate the profiling and quality assessment of a data source. Then take advantage of AI/ML-enabled auto-discovery and profiling within erwin Data Quality to detect data patterns and automatically generate data quality scores that will be visible throughout erwin Data Intelligence.

- **Easy data source connectivity** – Choose from an out-of-the-box library of industry-standard data source connectors including Amazon Redshift, Databricks, Google BigQuery, Microsoft Azure Synapse, SQL Server, Oracle, Snowflake and more for a quick start.
- **Consumer-friendly data quality discovery** – Explore data quality with search and filter capabilities similar to the ones you would find in online consumer shopping websites. View assets, tables, views, attributes, reports and more filtering by data quality scores, alerts, domains, applications, etc. to quickly zero-in on the information you need.

Benefits:

- **Leverage erwin Data Catalog metadata and data quality automation to profile, assess and understand the data quality of key data sources**
- **Make data quality metrics widely visible to IT, data governance teams and business users to assess data fitness, target issues and build data trust**
- **Ensure the quality of critical data remains high, such as data used to support AI, with cross-platform data observability and alerting**
- **Surface, collaborate on, and enable remediation of data quality issues**
- **Manage the entire data quality lifecycle of your most critical data assets**



erwin Data Quality makes it easy to delve into the health of your data estate with consumer-friendly search and filter capabilities similar to online shopping sites. View assets, tables, views, attributes, reports and more by data quality scores, alerts, domains, applications, etc. Use the platform's customizable dashboard for a bird's eye view of your estate.

- **Enterprise data quality visibility** – Select the frequency of profiling and quality measurement and view current data quality measures for data sources, datasets and grouped domains within erwin Data Quality. Data quality scores are shared across erwin Data Intelligence alongside data catalog metadata, in data lineage, impact analysis and mind maps, and can also leveraged within automated data value scoring inside erwin Data Marketplace.
- **Cross-platform data observability** – Take advantage of out-of-the-box data quality measures and gain a bird's eye view of data quality across key data sources and critical datasets supporting AI model use. Continuous quality monitoring with no-code advanced anomaly detection triggers alerts when data drifts outside of acceptable thresholds, so you can quickly triage alerts accordingly. And the platform's self-learning capabilities continues to evolve data quality measures in use based on triage decisions to efficiently fine-tune future monitoring.
- **Issue management and alerts integration** – Take advantage of built-in issue management capabilities

to create issues based on alerts, and manage data quality collaboration until issues are resolved. Leverage integration with Microsoft Teams, Slack, email, JIRA and ServiceNow to extend alerting and issue workflows outside of erwin.

- **Data remediation guidance and tools** – Leverage data remediation tools such as reference or ML-based curation and parsing rules to intelligently clean and enrich bad data. Integrate with additional third-party cleansing and enrichment solutions as needed. Generate coding scripts for use in ETL and other data pipeline management tools to speed issue resolution.

About Quest

Quest creates software solutions that make the benefits of new technology real in an increasingly complex IT landscape. From database and systems management, to Active Directory and Office 365 management, and cyber security resilience, Quest helps customers solve their next IT challenge now. Quest Software. Where next meets now.