

Toad[®] Data Studio

Master managing multi-platform database landscapes

Organizations across the globe are recognizing the advantages that can come from a multi-platform database approach over traditional monolithic approaches that use a single type of database to store and manage their data.

The limitations that come with the latter have spurred a dynamic shift towards a more diverse and flexible approach.

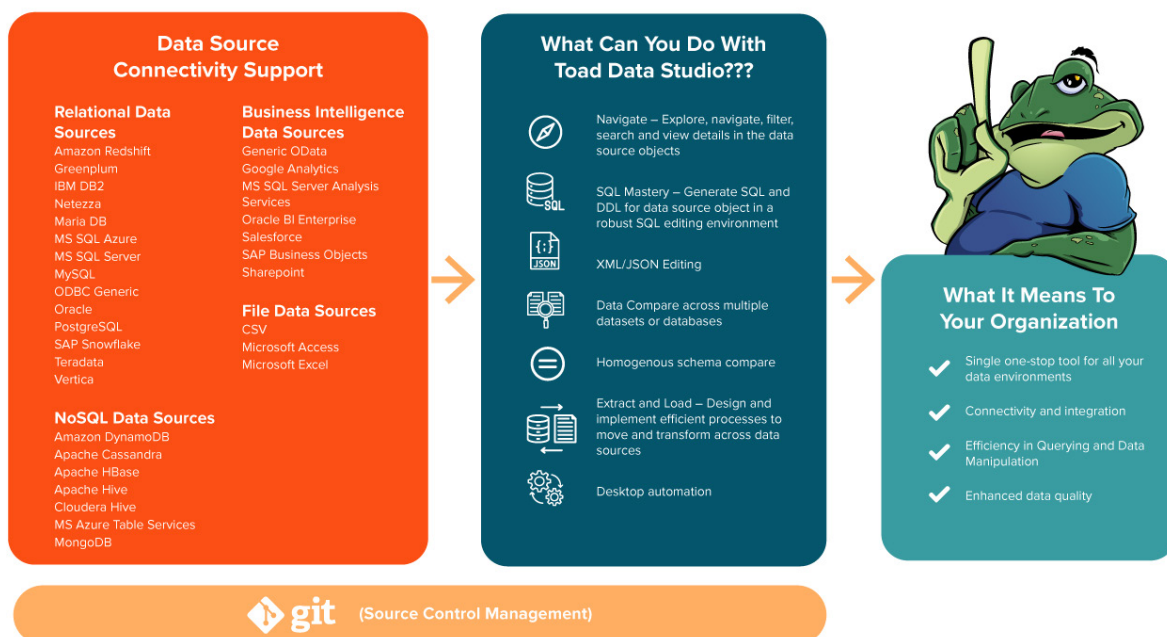
Toad Data Studio provides a single, heterogeneous solution for simplified database management in today's dynamic and diverse business landscape.

Designed from the ground up, it is a new, unified platform that will streamline operations and maximize the true potential of your data ecosystem.

And Toad Data Studio is engrained with the characteristics of the Toad suite of database products from Quest Software that you have come to know, trust and rely upon.

Benefits:

- Manage diverse data types and models all in one user-friendly solution
- Enable a heterogeneous approach to maximizing performance and ensuring the efficient use of resources
- Adjust and adapt to fluctuating data demands without experiencing bottlenecks or resource misalignment
- Keep up with the rapidly evolving landscape of technology
- Integrate with many different cloud-native database services
- Use the right platforms to maximize the effectiveness of your data use



70%

of organizations have more than one database management system in use.

Redgate's 2021 State of Database DevOps report

WHY TOAD DATA STUDIO?

- **Diverse data types and models:** You are dealing with several data sources, including on-premises and cloud relational databases, NoSQL, graph databases and more. Toad Data Studio is equipped to handle them all in one user-friendly solution.
- **Performance optimization:** While different data sources excel at different specialized tasks, being able to manage data when taking a heterogeneous approach can help to maximize performance and ensure efficient use of resources.
- **Flexible scalability:** As dynamic as the needs of your business are, the amount of data that you are utilizing can be even

more unpredictable at times. Toad Data Studio provides the ability to scale different components independently based on the current requirements. Organizations must be able to adjust and adapt to fluctuating data demands without experiencing bottlenecks or resource misalignment.

- **Innovation and adaptability:** Keep up with the rapidly evolving landscape of technology with a tool that will enable your organization to experiment with and implement new technologies seamlessly.
- **Cloud integration:** Similar to the advantages of a heterogeneous data strategy, cloud migration allows for increased flexibility and cost-effectiveness. Toad Data Studio is well suited for cloud environments and enables integration with many different cloud-native database services.
- **Specialized use cases:** Having a database tool that can work across different data sources allows you to ensure that you are using the right platforms to maximize the effectiveness of your data use.

Simply put, Toad Data Studio is right move for you to optimize your data infrastructure through the flexibility, performance optimization and adaptability that you ultimately need to navigate the complexities of modern data management.

Data Source Connectivity Support

Relational Data Sources

Amazon Redshift
Greenplum
IBM DB2
Maria DB
MS SQL Azure
MS SQL Server
MySQL
Netezza
ODBC Generic
Oracle
PostgreSQL
SAP
Snowflake
Teradata
Vertica

NoSQL Data Sources

Amazon DynamoDB
Apache Cassandra
Apache HBase
Apache Hive
Cloudera Hive
MS Azure Table Services
MongoDB

Business Intelligence Data Sources

Generic OData
Google Analytics
MS SQL Server Analysis Services
Oracle BI Enterprise
Salesforce
SAP Business Objects
SharePoint

File Data Sources

CSV
Microsoft Access
Microsoft Excel

Designed to meet the needs of organizations looking to capitalize on their data, Toad Data Studio is packed with the features you need to successfully and efficiently manage your multiplatform database environment.

Feature	What It Does	Why it Matters
Connectivity	Data engineers in today's market must be able to connect to nearly any data source including top on premises and cloud relational databases, popular NoSQL sources and more.	<ul style="list-style-type: none"> Heterogeneity allows organizations to choose the most suitable database technology for their specific use cases Allows for scalability across multiple data sources Productivity will increase when you can manage across a diverse environment in one tool
Data Source Explore and Search	Allows users to quickly and graphically explore the data source environment.	<ul style="list-style-type: none"> Simplicity and familiarity with navigation through the tool will build confidence and bolster efficiency Increased visibility to detail on particular objects and the ability to search for particular objects across numerous database sources in one single tool
SQL & DDL Generation	Quickly generate SQL for existing objects with one-click SQL generate for basic statements and easily create DDL.	<ul style="list-style-type: none"> Removes the burden and manual process of writing all SQL from scratch Accelerates SQL generation
Data Profiling	Visually profile and sample database tables and data sets for patterns, unique values, duplicates, missing information, min/max values and more.	<ul style="list-style-type: none"> Assess the quality of the data within your data sets to better understand the consistency and uniqueness of your data
SQL Editor	Full feature SQL editor supports standard SQL syntax as well as data source specific dialects.	<ul style="list-style-type: none"> Full usage and editing of the primary database language that data engineers come across daily
JSON/XML Viewer Editor	Allows users to read and edit JSON and XML fields directly within table fields or in their own separate editing window.	<ul style="list-style-type: none"> Promotes interoperability between relational and NoSQL databases Simplifies data management tasks Overall enhancement of the user experience
Query Builder and Database Diagramming	Enables you to create a query without writing or editing SQL statements.	<ul style="list-style-type: none"> Makes it easier to create relationships and visualize queries Helps teach how to build queries within the query builder
Data Compare	Provides robust data comparison capabilities across different environments such as comparing SQL results from a data source tree and SQL query results windows or developing comparison templates with highly configurable options.	<ul style="list-style-type: none"> Quickly and efficiently obtain a visual representation of data differences or discrepancies for more synchronization and support of version control Supports increased accuracy and reliability of data Contributes to a more efficient and collaborative development environment
Homogenous Schema Compare	Allows users to compare schema and generate change statements to help maintain data across pipelines and compare schemas/structures across homogenous database environments.	<ul style="list-style-type: none"> Can result in a more organized and consistent database development, deployment and management process Helps to save time in identifying and resolving schema differences that can be time-consuming when done manually Minimizes risk during deployment when users can preview changes before applying them
Data Export/Data Extract and Load	Allows users to move data between systems, either ad hoc or through a recurring schedule.	<ul style="list-style-type: none"> Enhances the overall efficiency and reliability of data-related processes in the development environment
Desktop Automation	Users can automate on the desktop as well as publishing automation into a server environment and published automations can be shared with other users for visibility into the automated routines.	<ul style="list-style-type: none"> Automation of repetitive tasks for efficiency gains Acceleration of development cycles Supports collaboration and continuous integration practices
GIT Integration	Allows for best practice version control.	<ul style="list-style-type: none"> Enhances version control and collaboration Adds a seamless experience for managing code changes

About Quest

Quest creates software solutions that make the benefits of new technology real in an increasingly complex IT landscape. From database and systems management, to Active Directory and Microsoft 365 migration and management, and cybersecurity resilience, Quest helps customers solve their next IT challenge now. Quest Software. Where next meets now.